

DESIGN PRESENTATION

ISSUE DATE: 01.04.19

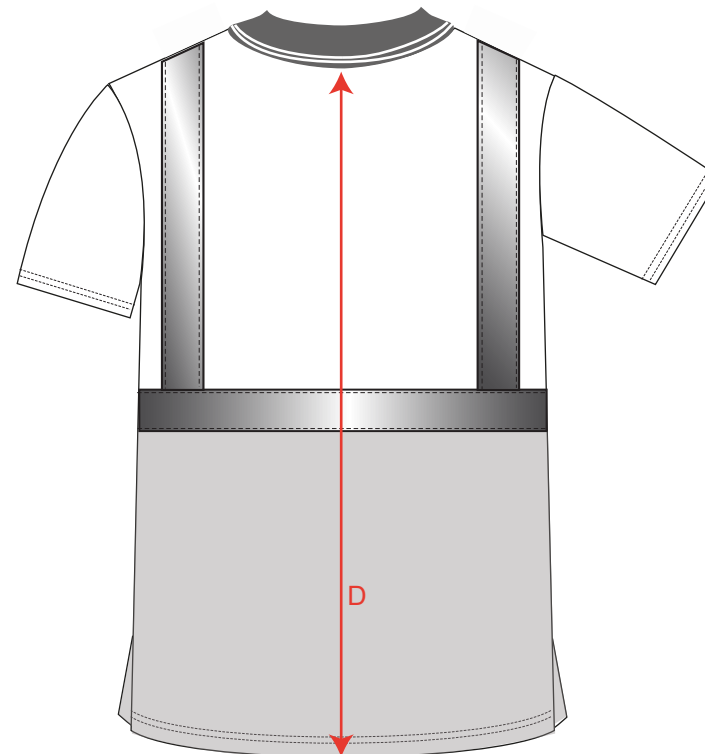
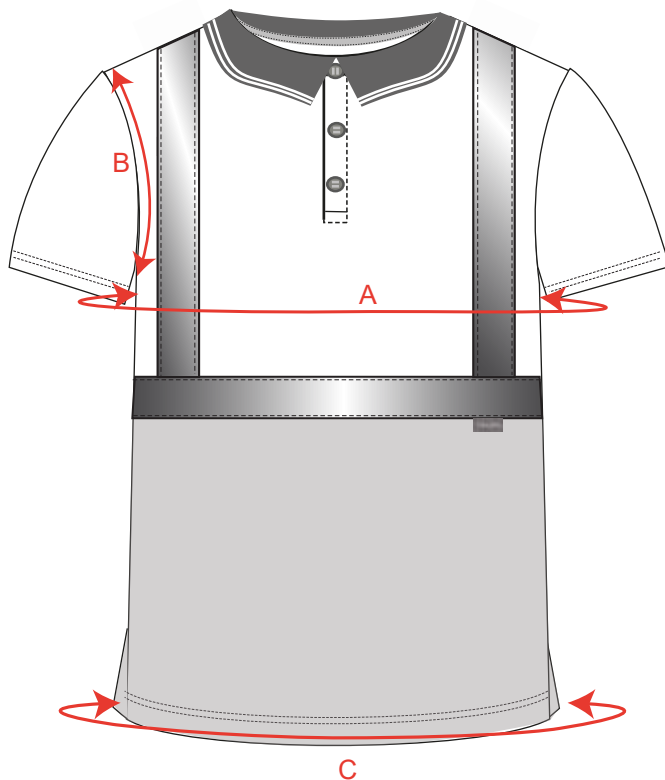
PAGE: 1 of 1

STYLE NO: S479

DESCRIPTION: Hi-Vis Two Tone Polo Shirt

FABRIC: 100% Polyester birdeye Knit

COLOUR:



Measurements			XS	S	M	L	XL	XXL	3XL	4XL	5XL	6XL	7XL
Chest	Inches	A	38.6	41.7	44.9	48.0	52.8	55.9	59.1	62.2	66.9	71.7	76.4
	Centimetres		98	106	114	122	134	142	150	158	170	182	194
Armhole	Inches	B	9.8	10.2	10.6	11.0	11.6	12.0	12.4	12.8	13.4	14.0	14.6
	Centimetres		25	26	27	28	29.5	30.5	31.5	32.5	34	35.5	37
Hem circumference	Inches	C	38.6	41.7	44.9	48.0	52.8	55.9	59.1	62.2	66.9	71.7	76.4
	Centimetres		98	106	114	122	134	142	150	158	170	182	194
Centre back Length	Inches	D	29.1	29.9	29.9	29.9	29.9	29.9	30.7	30.7	31.5	31.5	32.3
	Centimetres		74	76	76	76	76	76	78	78	80	80	82